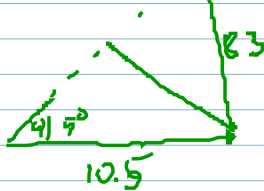


1060 5.1.14

$$\underline{a} = 41.5^\circ, \underline{a} = 8.3, \underline{b} = 10.5$$



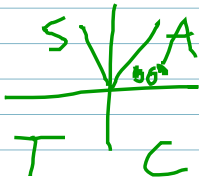
$$\frac{\sin \beta}{b} = \frac{\sin \alpha}{a}$$

$$\frac{\sin \beta}{10.5} = \frac{\sin 41.5^\circ}{8.3}$$

$$\sin \beta = 0.83825$$

$$\beta = \boxed{56.96^\circ}$$

$$\text{OR } 180^\circ - 56.96^\circ = \boxed{123.04^\circ}$$



$$\beta = 56.96^\circ$$

$$\gamma = 180^\circ - \alpha - \beta = 180^\circ - 41.5^\circ - 56.96^\circ$$

$$\gamma = \boxed{81.54^\circ}$$

$$\frac{c}{\sin \gamma} = \frac{a}{\sin \alpha} \Rightarrow \boxed{c = 3.34}$$

$$\beta = 123.04^\circ$$

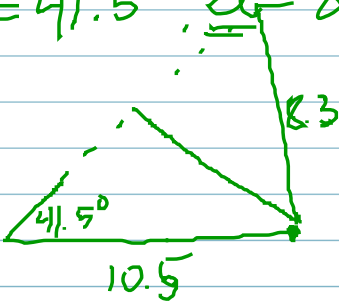
$$\gamma = 180^\circ - \alpha - \beta = 180^\circ - 41.5^\circ - 123.04^\circ$$

$$\gamma = \boxed{15.46^\circ}$$

$$\frac{c}{\sin \gamma} = \frac{a}{\sin \alpha} \Rightarrow \boxed{c = 12.38}$$

1060 5.1.14

$\alpha = 41.5^\circ$, $a = 8.3$, $b = 10.5$



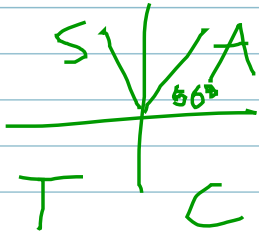
$$\frac{\sin \beta}{b} = \frac{\sin \alpha}{a}$$

$$\frac{\sin \beta}{10.5} = \frac{\sin 41.5^\circ}{8.3}$$

$$\sin \beta = 0.83825$$

$$\beta = 56.96^\circ$$

$$\text{OR } 180^\circ - 56.96^\circ = 123.04^\circ$$



$$\beta = 56.96^\circ$$

$$\gamma = 180^\circ - \alpha - \beta = 180^\circ - 41.5^\circ - 56.96^\circ$$

$$\gamma = 81.54^\circ$$

$$\frac{c}{\sin \gamma} = \frac{a}{\sin \alpha} \Rightarrow c = 3.34$$

$$\beta = 123.04^\circ$$

$$\gamma = 180^\circ - \alpha - \beta = 180^\circ - 41.5^\circ - 123.04^\circ$$

$$\gamma = 15.46^\circ$$

$$\frac{c}{\sin \gamma} = \frac{a}{\sin \alpha} \Rightarrow c = 12.38$$